



In this issue:

1st Updating Course for Teachers in Geosciences celebrates the Educational Landscapes of Naturtejo UNESCO Global Geopark
Meeting of the European Geoparks Network with new dynamics
Conference "Archaeology in Ródão - Recent works"
...and more!

CRUZIANA

NATURTEJO UNESCO GLOBAL GEOPARK - E-MAGAZINE



MONTHLY ACTIVITIES



March 30th to April 8th - Participation in the International Seminar APHELEIA - FÔLEGO (Ice N' Fire). The International Seminar APHELEIA - FÔLEGO (Ice N' Fire) promoted by the UNESCO Chair in Humanities and Integrated Cultural Management of the Territory of the Polytechnic Institute of Tomar took place in Mação. The meeting brought together artists and researchers, national and international experts from various areas who reflected on the role of the arts in structuring cultural landscapes.

The 10-day programme included debates, conferences, workshops, round tables and thematic visits, under the theme 'Arts and Sociocultural Transformation'. Strategies of education and social intervention were presented and debated, under the scope of the project Fôlego, where Naturtejo Geopark participates with the Municipality of Oleiros.

Joana Rodrigues participated in the debate 'Communicating Ice & Fire through the landscape' with Þorvarður Árnason, Professor at the University of Iceland and presented 'Resilience to Mega-fires and Climate Change in Naturtejo UNESCO Global Geopark'.

The event was attended by students from the Erasmus Mundus Master programs 'Dynamics of Cultural Landscapes and Heritage Management' and 'Quaternary and Prehistory' and also with students from the Mação Primary and Secondary Schools.

The project Fôlego is funded by EEA Grants and coordinated in Portugal by the Academy of Cultural Producers.

Intervenção Arqueológica na mamoa sob a capela da Senhora da Graça (Lucriz, Vila Velha de Ródão)

Anabela Joaquinito, João Caninas, Francisco Henriques, Nuno Félix, Carlos Carvalho, Francisco Curate, Pedro Fonseca



April 1st - Conference "Archaeology in Ródão - recent Works". The Conference "Archaeology in Ródão: recent works", organised jointly by the municipality of Vila Velha de Ródão and the Upper Tagus Study Association (AEAT), fulfilled the goal of providing public testimony of the archaeological works carried out in recent years in this territory, with emphasis on those that had municipal support and part of which are still under development. It was considered essential to continue working in wider institutional partnerships at the level of research, training, safeguarding and valorisation of archaeological sites and participation in wider networks, as is the case of the European routes of megalithics, rock art and UNESCO Global Geoparks, being worth mentioning that the municipality of Vila Velha de Ródão integrates Naturtejo UNESCO Global Geopark.

At the opening of the conference several ongoing works were highlighted, namely the municipal work of renovation of the Tejo Rock Art Interpretation Centre, the archaeological monitoring of works in the old town of Vila Velha de Ródão, with interesting results for the history of this village, and the elaboration of a monograph based on archaeological surveys carried out in the late 80's in an important pre-historical settlement in the region of Fratel.

The first two communications, concerning the Palaeolithic of Ródão, consisted of a historical retrospective on the research of this reality since the 70s of the 20th century, a reference to the work in progress aiming the publication of monographs on the three most researched sites (Vilas Ruivas, Foz do Enxarrique and Monte Famaco) and the presentation of a research project (PaleoTejo), under evaluation by the DGPC, anchored in the intention of creating an Archaeology School in Vila Velha de Ródão. The investment already made by the municipality in the interpretation centre of Foz do Enxarrique site, a quality infrastructure for the public promotion of this cultural heritage, should be mentioned. In the debate, concern was expressed about the deficient safeguarding conditions of the many paleolithic sites, not yet investigated, and associated geosites (staircase of Quaternary terrace deposits).

The following communication, which could not be carried out due to a personal impediment, referred to the investigation initiated at the site of Castelejo de Gardete, a granite hilltop where a prehistoric occupation distributed over various spaces has been documented and the remains of a medieval watchtower (Torre Dárdula or Gárdula) were found on its summit. This archaeological site presents morphological and historical characteristics that give it exceptional conditions for tourism and education.

Megalithic tombs, architectures of wide worldwide expression, have an important representation in Vila Velha de Ródão, with the first scientific excavation carried out in 1904, in the Urgueira dolmen. The intervention at Cabeço d'Ante, in Vilas Ruivas, in addition to the scientific results, testifies an exemplary case of study, protection and enhancement of heritage (inclusion on a pedestrian trail) with the help of the owners, the municipality and various companies and researchers.

The works initiated in 2021 on the embankment underlying the chapel of Senhora da Graça, owned by Companhia do Lucriz, support the thesis that this anthropic deposit is a prehistoric mound, surrounding a megalithic grave, reused for the settlement of that temple at least since the beginning of the 16th century. This case is a new example of the resacralisation of ancient spaces by monotheistic cults (Islam, Christianity), which are well represented in Portuguese territory (e.g. dolmens-chapels), as documented in the following communication.

Along with the Palaeolithic settlement, the Tejo rock art complex is another heritage present in the municipal territory with a relevance that transcends the national level. The importance of this collection was assumed by the municipality when it created, a few years ago, an interpretation centre (CIART) dedicated to the theme, which is currently being renovated (building and contents). In the following communication, the architectural project of the new CIART was highlighted, which, besides the renovation of the existing building, the old "Council Chambers", contemplates its valorisation with the addition of a contemporary architectural work.

Still in this domain, it is important to refer that, in 2021, 50 years have passed since the discovery of the Tejo rock art and that 10 years ago, at the time of the commemoration of the 40th anniversary of that discovery, the process of classification of the groups of Fratel, Cachão de São Simão and Cachão do Algarve was initiated by the supervising authority, supported by AEAT, but apparently this process died in the "hands" of the DGPC. It is therefore considered essential to resume the classification of this heritage of European importance, at least as of national interest.

The last communication, with a different direction from the previous ones, aimed to focus attention on the current situation of the creation and management of deposits of archaeological materials in Portuguese territory. It was evidenced the deep knowledge gap existing in the guardianship (DGPC) about the identification of the deposit sites (mainly provisional) of many mobile collections obtained both in excavations and in sporadic collections. The Municipality of Vila Velha de Ródão is monitoring this situation.

It was communicated by those present (AEAT) that there are currently deposits of archaeological materials in the Municipal Centre for Culture and Development, in Vila Velha de Ródão, and in the AEAT, in the same village, that an update of the inventories of these materials is being carried out and that there is the intention to join these materials in a single space, qualifying it as a definitive deposit. There was also a commitment to provide regular information about these collections. The adoption of the Recommendations for Good Practice in the Management of Archaeological Collections: collection, selection and disposal, published in 2021 in no. 24 of Almadan magazine, was also considered pertinent.

The archaeologists present expressed their full availability to collaborate with the Ministry in providing updated information about the deposits of archaeological materials under their responsibility.

April 7th - Online workshop "Digital Storytelling for Sustainable Tourism". Another online workshop took place as part of the Learn to Change Project. The theme of the session was 'Digital Storytelling for Sustainable Tourism' with presentation of the Loviisa Project and Loviisa Camping, followed by sharing ideas about sustainable travel preferences and opportunities for young people. Carla Jacinto represented Naturtejo Geopark.



April 8th - PhD studies in mining archaeology continue in Naturtejo Geopark. PhD student Pedro Baptista continues his work leading to his PhD thesis on Bronze Age objects and their provenance in the Beira region. On this day, he visited with his team of German teachers and technicians the Francisco Tavares Proença Júnior Museum, in Castelo Branco. After obtaining samples of the granite facies that constitute the stelae from S. Martinho, the team left for the field with Carlos Neto de Carvalho searching for possible sites from where they may have originated.



April 9th to 16th - At Idanha-a-Nova Bio-Region Market. April editions of Idanha-a-Nova Bio-Region Market brought to the square, not only the local community, but also many visitors who passed through the territory during the Easter period.

Besides Naturtejo Geopark's space, where the consumers could know the Geoproducts and GEOfood, the partners Geocakes (Idanha-a-Nova) and Vale de Alfaia (Sobral do Campo) had their own stand.

April 12th - Launch of the Chumbo Art Gallery Podcast about the Fault/Falha Project. Chumbo Gallery is both a physical and conceptual space, aiming to explore social, philosophical and political issues through creative research <https://chumbo productions>

They are currently developing the FAULT/FALHA project dedicated to creative research, which will include several interviews, essays and art projects. Wanting to explore and investigate this theme from a 360 degree perspective, they have recently learned about the geological connection between the Muradal Range and the Appalachian Mountains in the USA. Within FAULT / FALHA then resulted a long and relaxed conversation in Landscape about the Muradal Mountain and its geological heritage. It is a podcast of over an hour, but where we talk without filters about many other subjects, because the Muradal Mountain is a palimpsest of geological, cultural and social heritage, with enormous potential. Thanks to André Ventura for this adventure.

For those who want to listen to the podcast:

<https://open.spotify.com/episode/5hMgg2c2NPRjmeBvKqq9jR...>



April 11th to 13th - Erasmus Mundus Master student works on the Paleontological Heritage from Naturtejo Geopark

April 11th to 13th - Erasmus Mundus Master student works on the Paleontological Heritage from Naturtejo Geopark. During this semester, Fernando Testa, a student of the Erasmus Mundus Master's Program PANGEA, is developing its thesis on the Paleontological Heritage of Naturtejo Geopark, in a partnership between the Universities of Lille (France), Uppsala (Sweden), Minho (Portugal) and the Naturtejo UNESCO Global Geopark. Under the guidance of Professors Sebastien Clausen and Paulo Pereira, geosites with paleontological interest are being studied with the aim of developing science communication strategies. The investigation will include the presentation of proposals for the valorization of the paleontological heritage of the Naturtejo Geopark. Fernando Testa carried out the first field internship where he met some of the geosites to study



April 28th - Field Trip "Portas de Ródão Natural Monument and Vila Velha de Ródão Fossil Trunks . In this activity, within the scope of the Biology and Geology subject, 76 students from the 11th grade of Quinta do Marquês Secondary School, in Oeiras, accompanied by 6 teachers, participated. During the field trip they had the opportunity to know and learn in situ about the Natural and Historical-Cultural Heritage of Vila Velha de Ródão. The trip started with a boat trip in Tejo River where the students could learn and understand Portas de Ródão Natural Monument, observe the birds that nest there and other geosites in the territory of Naturtejo Geopark. Then, they visited the Fossil Trunks in the garden of the House of Arts and Culture of Tejo. The field trip was guided by Catarina Caria.

April 28th - Participation in the Workshop "Geoconservation UMinho 2022". In the scope of her PhD in Sciences - Geology, at the Earth Sciences Department of the University of Minho, Manuela Catana presented the communication "Geosciences Education for Sustainability at Naturtejo UNESCO Global Geopark", during the workshop that gathered master and PhD students in geoconservation of UMinho.



April 28th to 30th - European Geoparks Network Meeting with new dynamics. The 45th edition of the Coordination Committee Meeting of the European Geoparks Network was again held face-to-face, this time at De Hondsrug Geopark in the northeast of the Netherlands. In a partnership between this and the neighbouring TERRA.Vita Geopark in Germany, the meeting edition brought more fluid discussion dynamics and outdoor meals in the magnificent park dedicated to megalithic monuments. Several workshops were held to discuss themes, two of which dedicated to "Geoparks and business relations" were streamlined by Carlos Neto de Carvalho and Hartmut Escher. These workshops took place as a brainstorming walk through nature, according to Hartmut Escher's idea, in the surroundings of the Fletscher Hotel De Zeegser Duinen.

The attendance was massive and productive, with more than 40 colleagues. The moderators started by presenting their own approach to collaboration with local partners, presenting good and bad examples of cooperation with big companies operating in geoparks territories, as well as examples of geoparks brands and active cooperation to promote partners and their products. This presentation was made during a pleasant walk in the nature, where moderators used microphones and participants used headphones, following good practices considering the pandemic period we are still facing;

The participants were driven back to the hotel, but stayed outside in a picnic area where they were invited by the moderators to present their experiences, challenges and dilemmas. There was a fruitful exchange of examples with special reference to some good practices:

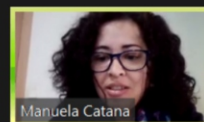
- The Ecotourism network in Burren and Cliff of Moher Geopark;
- The artisans' festival in the Psiloritis Geopark;
- The geosites passport with discounts on partner services in Vikos-Aoos Geopark;
- The geotourism map of the Muskau Arch Geopark with a participation fee for partners that allows printing editions of 100,000 maps and a massive distribution;
- Increasing the visibility of partners during the pandemic through promotional videos made in Las Loras Geopark;
- The international Geofood brand developed by Magma Geopark to widely promote the excellence of local food and products, with over 100 local partners from dozens of UNESCO Geoparks around the world;
- The promotional strategy of the Rokua Geopark integrating partners at different sponsorship levels, which also brings more responsibility of local companies in the definition of the annual plan of promotion of the Geopark;
- The strong Geovilluercas partnership of 90 local companies that are part of the Geopark Council and have an active role in the promotion of the geopark and local traditional products;
- Collaboration of different European Geoparks with quarries for environmental remediation, scientific research and educational activities.

All participants realised that there are no standard criteria for being a Geopark partner, with geoparks working with multinational corporations or companies that are not based in the geopark territory and collaborating with local quarries, polluting and mining industries for sponsorship, but also to reduce environmental impacts and push them towards a more sustainable operation. Partnerships are decisions of the individual geoparks according to their strategic vision at local and regional level.

The UNESCO Geopark logo and visibility on geopark websites are not enough to promote local partners and more active promotion and support of Geoparks is needed.

Best practices are proudly presented, but the moderators noted that it is very difficult for participants to present approaches that have failed. These examples could be even better case studies, but we believe that the 4-year revalidation system of the UNESCO Global Geopark does not benefit the exchange of ideas on failed projects in geoparks.

ESTRATÉGIA EDUCATIVA DO GEOPARK NATURTEJO - GEONATURESOLA



Desativar mudo Interromper Video

Participantes 69 Bate-papo Compartilhar tela Gravar Reações Aplicativos

April 30th - 1st Updating Course for Teachers in Geosciences-Special celebrates the Educational Landscapes of Naturtejo UNESCO Global Geopark .

The book "Educational Landscapes of the Naturtejo UNESCO Global Geopark" was presented this weekend in the 1st Updating Course for Teachers in Geosciences - Special. This course accredited by the CCPFC for teachers of groups 230, 420 and 520 from all over the country is an organization of the Portuguese Association of Geologists in partnership with Naturtejo UNESCO Global Geopark. The book coordinated by Carlos Neto de Carvalho, Joana Rodrigues and Maria Manuela Catana makes a synthesis for the teachers of the main fundamental and applied geoscientific studies that have taken place in the territory of Naturtejo Geopark, which covers the municipalities of Castelo Branco, Idanha-a-Nova, Nisa, Oleiros, Penamacor, Proença-a-Nova and Vila Velha de Ródão. These studies are developed by researchers from the main Portuguese universities in collaboration with Naturtejo Geopark. The book, made by these researchers especially for primary and secondary school teachers, makes a chronological trip through the main stages of the geological evolution of the region's landscape, presenting some of the best geomonuments and sites of geological importance existing and visitable. Important examples of the application of geoscientific knowledge to concrete problems experienced in the region are also presented, such as studies on the stability of rocky slopes, the quantification of underground water reserves and their vulnerability to anthropic activities.

This Special Edition marks the 20 years of the 21st CAP which took place in Castelo Branco and Idanha-a-Nova, currently integrated in the UNESCO Global Geopark. An organization which counted at the time and in the region with researchers from the Agricultural School of Castelo Branco and local members of APG, such as Professor Isabel Margarida Antunes, currently at the University of Minho, and the well known veterinarian of Idanha-a-Nova, Dr. Serejo Proença, and which ended up being the embryo which led the municipality of Idanha-a-Nova in 2005 to lead the candidacy, through the Association of Municipalities Nature and Tejo, of the territory to the Global Geoparks Network, now part of the Global Geoparks Programme of UNESCO.

The webinars that involved almost 100 teachers from all over the country in interaction with researchers will be followed next weekend by the Field Course of 30 hours, which will take teachers to discover some of the main geomonuments and sites with educational relevance to geosciences in the territory of Naturtejo UNESCO Global Geopark. This visit is structured in a way that the examples can be adapted to all teaching levels.

The book "Educational Landscapes of Naturtejo UNESCO Global Geopark" can be downloaded for free at www.naturtejo.com (Documentation).

IMPACT OF GEOPARK IN MEDIA



Newspapers & www

April (National Geographic Special Travel Magazine) - Nature Tours in Portugal

April (<https://geofood.no>) – Viladoce family company in Naturtejo Geopark, Portugal, joined GEOfood.

April 1st (BeiraNews) - Italian and Portuguese scientists discover Leonardo da Vinci's "paleontological laboratory"

April 1st (revistajardins.pt) – Italian and Portuguese scientists discover Leonardo da Vinci's "paleontological laboratory"

April 3rd (Açoriano Oriental) – Geo Partnerships - LISBON TOURISM FAIR – BTL

April 12th (Chumbo Gallery podcast) – Interview with Carlos Neto de Crvalho on Muradal Mountain

SCIENTIFIC CONTRIBUTIONS FOR THE GEOPARK AND THE GEOSCIENCES



- FIGUEIREDO, S.D., CUNHA, P.P., SUBERBIOLA, X.P., NETO DE CARVALHO, C., CARVALHO, I.S., BUFFETAUT, E., TONG, E., SOUSA, M.F., ANTUNES, V. & ANASTÁCIO, R. - The dinosaur tracksite from the lower Barremian of Areia do Mastro Formation (Cabo Espichel, Portugal): implications for dinosaur behavior. *Cretaceous Research*, <https://doi.org/10.1016/j.cretres.2022.105219>.

- NETO DE CARVALHO, C., RODRIGUES, J.C. & CATANA, M.M. (eds.) - Paisagens Educativas do Geopark Naturtejo Mundial da UNESCO. Naturtejo, EIM, Castelo Branco, 96 pp.

- CATANA, M.M., RODRIGUES, J.C. & NETO DE CARVALHO, C. - Paisagens Educativas do Geopark Naturtejo Mundial da UNESCO – Guia do Curso de Campo. Naturtejo, E.I.M., 53 pp.

- CASTILHO L. C., NEVES J., SILVA R. J. N., RAPOSO D., PINHO J., DESTERRO T., PAIVA T., RAMOS E. & RODRIGUES J. 2021 Aspetos da música na Ordem de Cristo e os ritos diocesanos no século XVI. In Fernandes I (coord), *Ordens Militares, Identidade e Mudança* Textos selecionados do VIII Encontro sobre Ordens Militares, Gabinete de Estudos sobre a Ordem de Santiago (GESOS). Município de Palmela, vol. 1I, 1131-1140.

- CANINAS, J., MONTEIRO, M., HENRIQUES, F., CURATE, F., NETO DE CARVALHO, C. & ANACLETO, C. – Megalitismo de Ródão: a intervenção em Cabeço d'Ante (Vilas Ruivas). *Colóquio Arqueologia em Ródão: trabalhos recentes, Livro de Resumos*. Associação de Estudos do Alto Tejo, 9.

PROMOTION FOR THE GENERAL PUBLIC

94 Geoparks

28 Countries

EUROPEAN GEOPARKS WEEK

21 MAY - 5 JUNE 2022

www.europeangeoparks.org

Semana Europeia de GEOPARQUES

 — 23 maio a 05 junho —

Fique atento aos programas dos geoparques portugueses a serem lançados nos próximos dias e não deixe de participar nas atividades!

Global Geopark

Semana Europeia dos Geoparques da UNESCO

 European Geoparks Week in UNESCO

 Naturtejo Global Geopark

festival DA PAISAGEM 2022

 20 DE MAIO A 5 DE JUNHO | MAY 20th TO JUNE 5th

www.naturtejo.com

Semana Europeia dos Geoparques da UNESCO

 European Geoparks Week in UNESCO

 Naturtejo Global Geopark

festival DA PAISAGEM 2022

 20 DE MAIO A 5 DE JUNHO | MAY 20th TO JUNE 5th

www.naturtejo.com

20.05 Videomapping em Movimento - Tatagens (Projeto Filégo) | Videomapping - Tattoos
 Montão da Senhora, Prança - Nova
 Organização: Associação Municipal do Município de Prança - Nova
 Localização: Prança - Nova, Município de Prança - Nova
www.naturtejo.com

20-21.05 Ação de Formação para Professores de Biologia e Geologia | Training Course for Biology and Geology Teachers
 Monte da Senhora, Prança - Nova
 Organização: Associação Municipal do Município de Prança - Nova
www.naturtejo.com

20.05-5.06 Exposição "A Natureza em Movimento" de António André
 Museu Municipal de Prança - Nova
 Organização: Associação Municipal do Município de Prança - Nova
www.naturtejo.com

21.05 Mercado do Xisto | Schist Market
 Praia Fluvial de Cambas, Bieiros
 Organização: Associação Municipal do Município de Bieiros
www.naturtejo.com

21.05 Visita Guiada e Encenação de Gileiros | Guided Tour to Gileiros
 Prança de República, Oleiros
 Organização: Associação Municipal do Município de Prança - Nova
www.naturtejo.com

21-22.05 Conferência online sobre sono infantil "Crescer (fácil) é Dormir (bem)" | Webinar on children's sleep "Growing (easy) by Sleeping (well)"
 Associação Municipal do Município de Prança - Nova
www.naturtejo.com

21-22.05 Festival da Cereja e do Limão | Cherry and Lemon Festival
 Montão da Senhora, Prança - Nova
 Organização: Associação Municipal do Município de Prança - Nova
 Localização: Prança - Nova, Município de Prança - Nova
www.naturtejo.com

22.05 BiodiSummit: Biodiversidade na era de transição digital e climática | Biodiversity in the digital and climate transition
 Centro Ciência Viva da Floresta, Prança - Nova
 Organização: Associação Municipal do Município de Prança - Nova
www.naturtejo.com

22.05 Passeio Pedestre Montes de Cerejas | Piles of Cherries Walking
 Montes da Senhora, Prança - Nova
 Organização: Associação Municipal do Município de Prança - Nova
 Localização: Prança - Nova, Município de Prança - Nova
www.naturtejo.com

22.05 Teatro «A maior flor do mundo» | Theatre "The largest flower in the world"
 Centro Cultural Raiana, Marinh - Nova
 Organização: Associação Municipal do Município de Marinh - Nova
www.naturtejo.com

22-23.05 Pínguentos: Visita e conversa @ escola (Projeto Filégo) | Pinguins: school workshop
 Escola sede do Agrupamento de Escolas Padre António da Andorinha, Oleiros
 Organização: Associação Municipal do Município de Oleiros
www.naturtejo.com

25.05 Caminhada Noturna de Gileiros | Gileiros Night Walk
 Gileiros, Oleiros
 Organização: Associação Municipal do Município de Oleiros
www.naturtejo.com

25.05 Dia de África | Africa's Day
 Recinto de Fátima, Marinh - Nova
 Organização: Associação Municipal do Município de Marinh - Nova
www.naturtejo.com

25-27.05 Encontro de Geoparques Mundiais da UNESCO de Portugal | UNESCO Global Geoparks in Portugal Meeting
 Aranca
 Organização: Associação Municipal do Município de Oleiros
 Localização: Oleiros, Município de Oleiros
www.naturtejo.com

25.05 Mercado da Bio-Região | Bio-Region Market
 Mercado Municipal, Marinh - Nova
 Organização: Associação Municipal do Município de Marinh - Nova
www.naturtejo.com

25.05 Workshop "Foraging nas Terras do Lince-Natureza a mesa" | "Foraging in the Lands of the Lynx-Nature on the table"
 Sábado
 Associação Municipal do Município de Prança - Nova
 Localização: Prança - Nova, Município de Prança - Nova
www.naturtejo.com

1.06 Dia da Criança: Mercadinho Saudável | World's Children's Day: Healthy Market
 Centro Raiana
 Organização: Associação Municipal do Município de Marinh - Nova
www.naturtejo.com

1-5.06 Dia da Música | Music Days
 Malhadas das Deseiras Altas, Oleiros
 Organização: Associação Municipal do Município de Oleiros
www.naturtejo.com

1-5.06 Exposição Notícia de Arte | Exhibition Art News
 Galeria Municipal de Oleiros
 Organização: Associação Municipal do Município de Oleiros
www.naturtejo.com

2-3.06 Comemoração do Dia Mundial da Criança com Teatro-vivência | Celebration of the World's Day of Children with Theatre
 Escolas do concelho de Oleiros - Nova
 Organização: Associação Municipal do Município de Oleiros - Nova
www.naturtejo.com

4.06 Encontros literários para a infância | Iberian Meetings for Children
 Forum Cultural, Marinh - Nova
 Organização: Associação Municipal do Município de Marinh - Nova
www.naturtejo.com

5.06 Dia Mundial do Ambiente: Concerto Mús Verdade - Projeto Filégo | World's Environment Day: Concert Green Hand - Filégo Project
 Prança - Nova
 Organização: Associação Municipal do Município de Prança - Nova
www.naturtejo.com

FESTIVAL de Música Infantil de Oleiros | Children's Music Festival of Oleiros
 Malhadas das Deseiras Altas, Oleiros
 Organização: Associação Municipal do Município de Oleiros
www.naturtejo.com

Concerto «The Kids Live» | Concert «The Kids Live»
 Centro Cultural Raiana, Marinh - Nova
 Organização: Associação Municipal do Município de Marinh - Nova
www.naturtejo.com

PROMOTION FOR THE GENERAL PUBLIC



Campanha de Verão
4 a 30 de julho de 2022

Escavações Arqueológicas
 Campo 1: Bateria das Baterias I
4 a 16 de julho
 Campo 2: Sepultura megalítica
11 a 23 de julho
 Campo 3: Igreja Velha do Peral
18 a 30 de julho

Exposição "10 anos de Campo Arqueológico de Proença-a-Nova
8 de Julho (inauguração)

Conferências
9, 16 e 23 de Julho

Visita de Estudo
17 de Julho

Jantar Convívio
14 e 20 de Julho

Contactos para informações:
+351 914 466 382 / 272 545 074 (AEAT)
altotejo@gmail.com
archaeologicalfieldcamps-portugal.pt

Archeological Field Camps Portugal

MESOPOTAMOS

LDTM

Proença-a-Nova International Archaeological Field Camp

2022

Campo Arqueológico de Proença-a-Nova

Portugal

PROMOTION FOR THE GENERAL PUBLIC



Visit Naturtejo Geopark in:



www.geoparknaturtejo.com



www.facebook.com/geoparknaturtejo.mesetameridional



www.instagram.com/geopark_naturtejo/



www.youtube.com/geoparknaturtejo



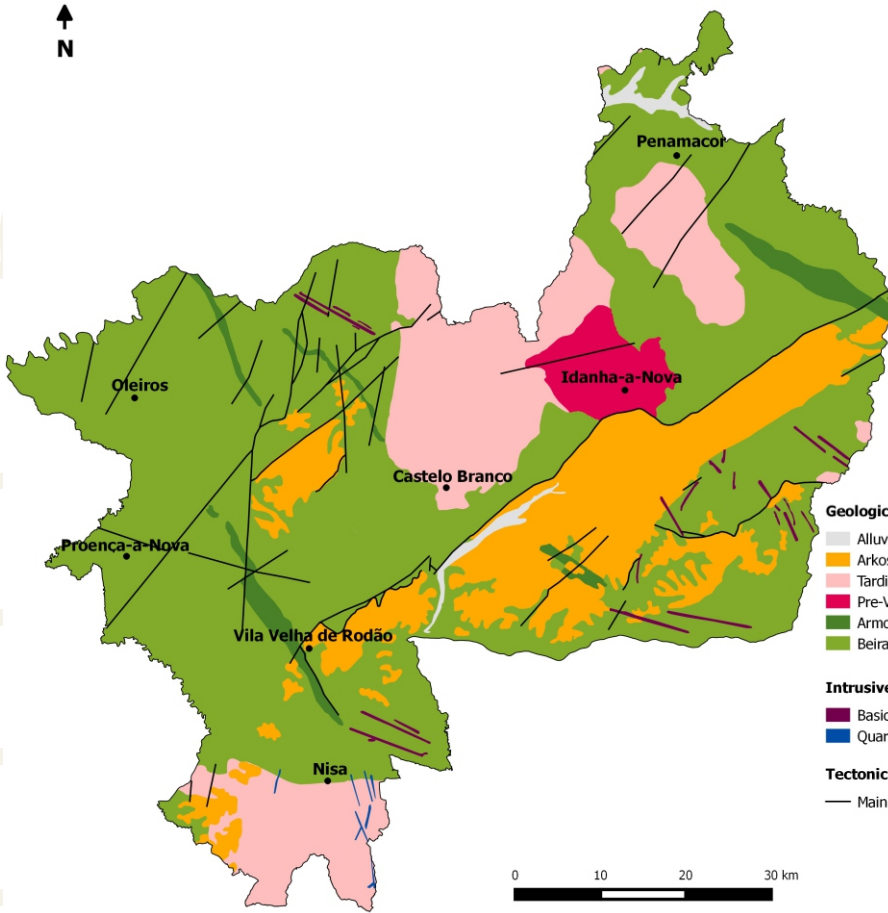
issuu.com/geoparknaturtejo



https://twitter.com/Geo_Naturtejo



<https://www.linkedin.com/company/geoparknaturtejo/>



Geological Formations (Ma-Million years)

- Alluvium and fluvial terraces - Plistocene-Holocene (1Ma-present)
- Arkoses, breccias and conglomerates - Eocene-Pliocene (50-2.6Ma)
- Tardi-Variscan orogenic granites (315-300Ma)
- Pre-Variscan granodiorites (480-472Ma)
- Armorican Quartzite and schists - Ordovician-Lower Silurian (488-435Ma)
- Beiras Group (schists and greywackes) - Neoproterozoic (610-542Ma)

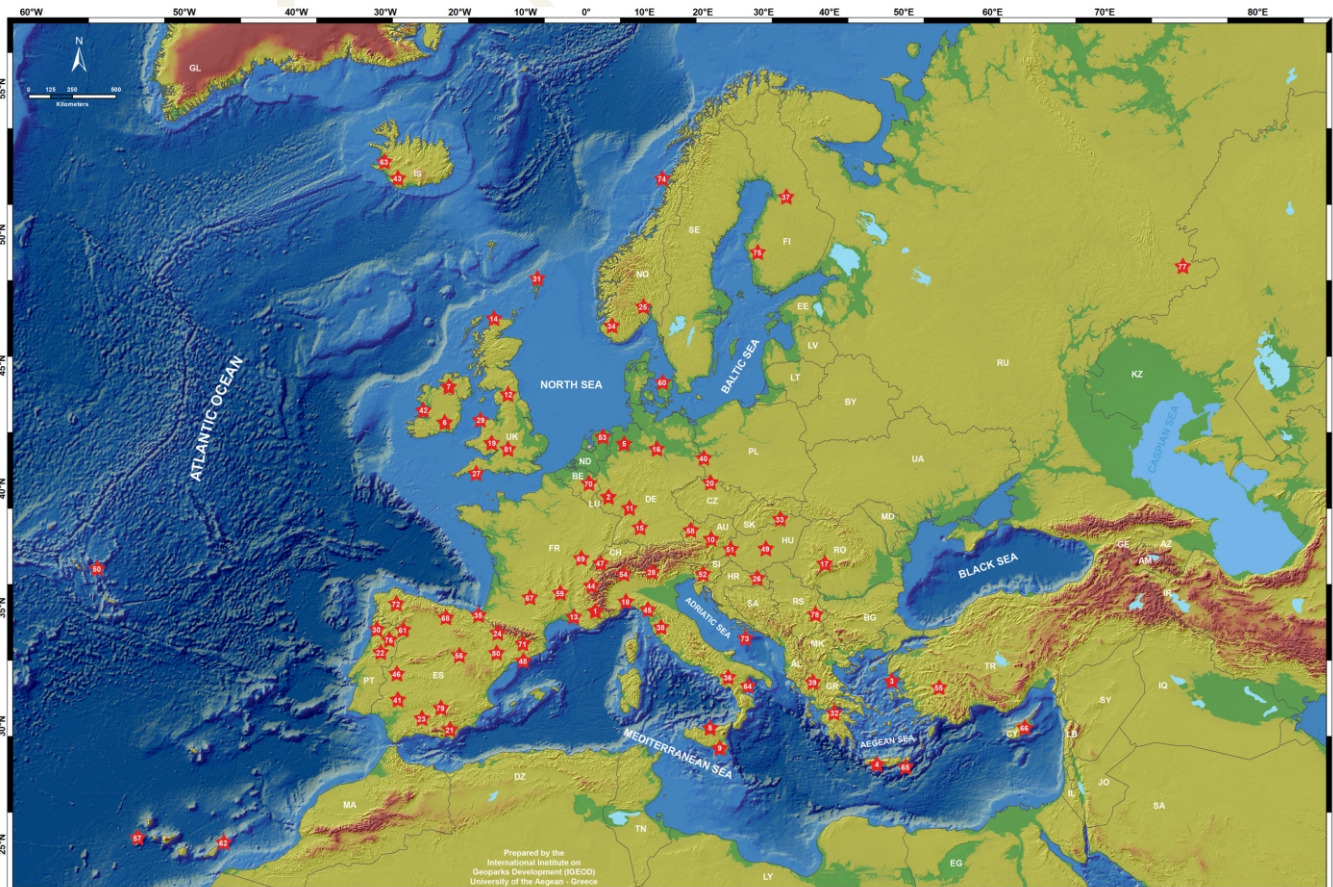
Intrusive rocks

- Basic rocks, aplites and pegmatites
- Quartz

Tectonic

- Main faults

Geoparks: Geology with human face





Edition - Geopark Naturtejo, 2022
Coordination - Carlos Neto de Carvalho
Texts - Carlos Neto de Carvalho, Joana Rodrigues,
Manuela Catana, Carla Jacinto,
Associação de Estudos do Alto Tejo
Photos - Carlos Neto de Carvalho,
Joana Rodrigues, Manuela
Catana, Micha Groenewegen
Clipping - Carla Jacinto e Alice Marcelo
Design - Layer [Design and Print Studio]
Translation - Carla Jacinto
Editing - Joana Rodrigues



CRUZIANA

GEOPARK NATURTEJO DA MESETA MERIDIONAL EUROPEAN AND GLOBAL GEOPARK MONTHLY REPORT

www.geoparknaturtejo.com

NATURTEJO UNESCO GLOBAL GEOPARK - E-MAGAZINE