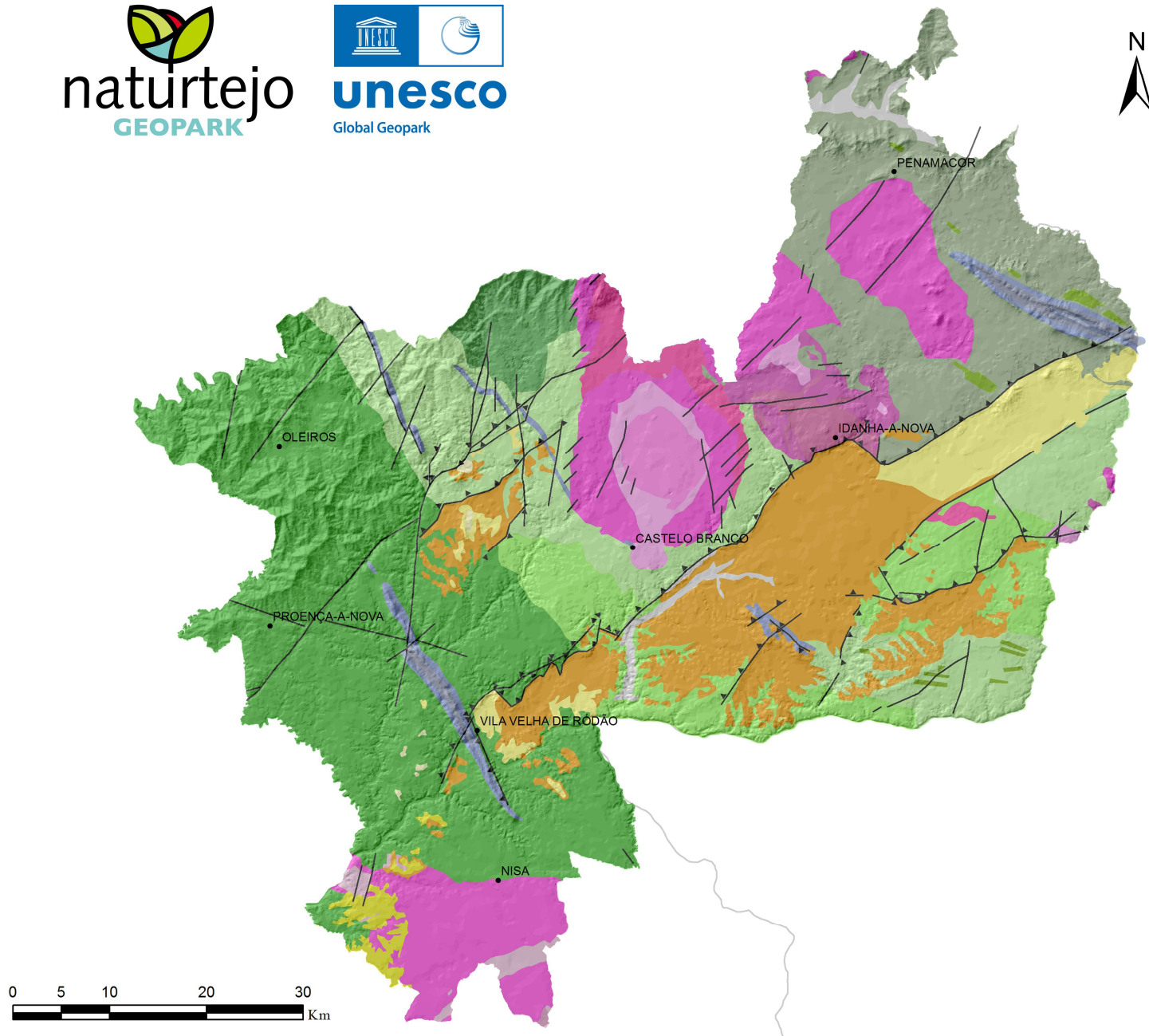


Geological Map

Naturtejo UNESCO Global Geopark



Legend (Ma-Million years)

Alluvium - Plistocene-Holocene (1Ma to present)

Arkoses, Breccias and Conglomerates

Eocene-Pliocene (50-2.6 Ma)

Almeirim Conglomerate

Murracha Gr.

Silveirinha dos Figos Fm.

Cabeço do Infante Fm.

Tardi-Variscan orogenic granites

315-300 Ma

Biotite granite

Porphyritic biotite granite

Muscovite-biotite granite

Gneissic granite

Orthogneiss

Pre-Variscan granodiorites

480-472 Ma

Nonporphyritic granite and granodiorite

Quartz diorite and biotite granodiorite

Monzonite granite with large crystals

Armorican Quartzite and schists

Ordovician Lower Silurian (488-435 Ma)

Rio Ceira Gr.

Sanguinheira Gr.

Cácemes Gr.

Aarmorican Quartzite

Beiras Group (schists and greywackes)

Neoproterozoic (610-542 Ma)

Beiras Gr. Conglomerate

Almaceda Fm.

Rosmaninhal Fm.

Perais Fm.

Malpica Fm.

Undifferentiated

Tectonic

Faults

Thrust faults